



RV Aranda

CRUISE PLAN

Combine 1 Leg 2, 1/2016 25.1. - 5.2.2016

Description of the cruise

Monitoring of physical parameters (temperature, salinity, dissolved oxygen), general hydrography, nutrients and zooplankton of the Baltic Sea according to HELCOM MONAS program. This cruise is partly cooperation with SMHI Sweden, and thus also carries out Swedish Monitoring activities in Bay of Bothnia, Åland Sea and Northern Baltic Proper.

Scientific staff:

Chief scientist:	Juha Flinkman	SYKE	25.01.2016 - 05.02.2016
CTD chief:		SYKE	25.01.2016 - 05.02.2016
Chief chemist:		SYKE	25.01.2016 - 05.02.2016
IT chief:		SYKE	25.01.2016 - 05.02.2016
		FMI	25.01.2016 - 05.02.2016
		SYKE	25.01.2016 - 05.02.2016
		SYKE	25.01.2016 - 05.02.2016
		FMI	25.01.2016 - 05.02.2016
		SYKE	25.01.2016 - 05.02.2016
		SYKE	25.01.2016 - 05.02.2016
		FMI	25.01.2016 - 05.02.2016
		STOCKHOLMUNI	01.02.2016 - 05.02.2016
		SYKE	25.01.2016 - 01.02.2016

Altogether 12 persons in scientific staff.

Departure from: HELSINKI
Departure time: Monday 25.01.2016 at 12:00

Cruising speed: 10,0 knots
Average station time: 1 h 30 min.

Arrival to: HELSINKI
Arrival time: Friday 05.02.2016 at 11:16

Duration of the cruise: 10 days 23 h 16 min
Length of the cruise: 1822,82 nautical miles
Number of stations 45. Points with name "P" are just route points without observations.

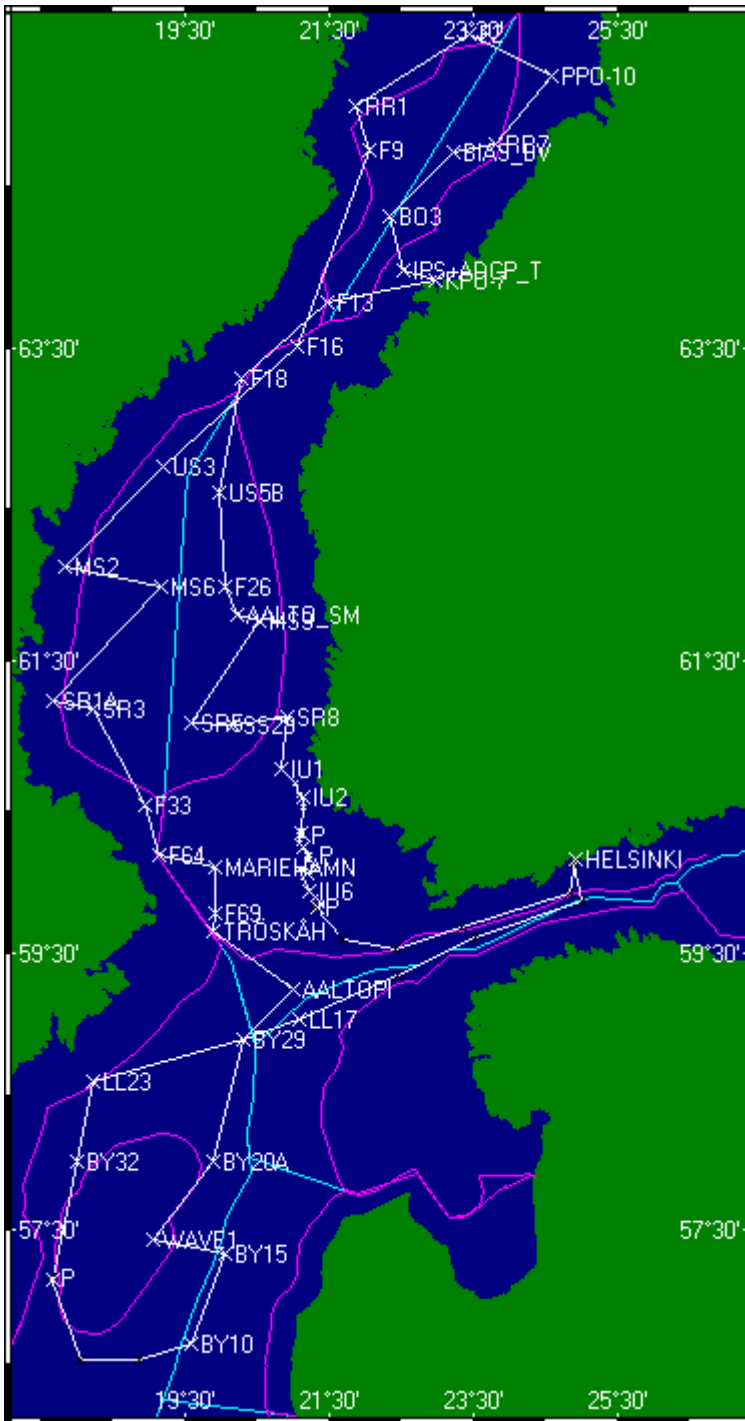
Route:

Nro	Station	Lat.	Long.	Depth [m]	hh:mm	Arrival dy	dd.mm.yyyy	Durat. hh:mm	Speed knots
0	HELSINKI	60°09.55'	24°55.37'	0	12:00	Mo	25.01.2016	0:00	S 10,0
1	P	59°55.16'	24°50.48'	-	13:27	Mo	25.01.2016	0:00	S 10,0
2	P	59°40.89'	23°20.39'	-	18:12	Mo	25.01.2016	0:00	S 10,0
3	P	59°31.60'	22°25.33'	-	21:08	Mo	25.01.2016	0:00	S 10,0
4	P	59°35.83'	21°41.95'	-	23:23	Mo	25.01.2016	0:00	S 10,0
5	P	59°49.29'	21°18.60'	-	01:10	Tu	26.01.2016	0:00	S 10,0

6	IU7	59°48.91'	21°20.20'	92	01:15	Tu	26.01.2016	1:00	S	10,0
7	P	59°50.50'	21°24.00'	-	02:30	Tu	26.01.2016	0:00	S	10,0
8	P	59°51.00'	21°24.20'	-	02:33	Tu	26.01.2016	0:00	S	10,0
9	P	59°53.50'	21°18.00'	-	02:57	Tu	26.01.2016	0:00	S	10,0
10	IU6	59°56.21'	21°13.26'	120	03:19	Tu	26.01.2016	1:00	S	10,0
11	P	60°05.00'	21°05.10'	-	05:17	Tu	26.01.2016	0:00	S	10,0
12	P	60°04.55'	21°12.80'	-	05:40	Tu	26.01.2016	0:00	S	10,0
13	P	60°06.25'	21°17.20'	-	05:57	Tu	26.01.2016	0:00	S	10,0
14	P	60°07.00'	21°18.00'	-	06:02	Tu	26.01.2016	0:00	S	10,0
15	P	60°09.40'	21°13.75'	-	06:21	Tu	26.01.2016	0:00	S	10,0
16	P	60°09.20'	21°12.75'	-	06:24	Tu	26.01.2016	0:00	S	10,0
17	P	60°11.10'	21°13.80'	-	06:36	Tu	26.01.2016	0:00	S	10,0
18	P	60°11.30'	21°12.40'	-	06:40	Tu	26.01.2016	0:00	S	10,0
19	IU4	60°14.00'	21°08.80'	51	07:00	Tu	26.01.2016	1:00	S	10,0
20	P	60°15.60'	21°05.50'	-	08:14	Tu	26.01.2016	0:00	S	10,0
21	P	60°19.20'	21°06.25'	-	08:35	Tu	26.01.2016	0:00	S	10,0
22	P	60°19.40'	21°05.50'	-	08:38	Tu	26.01.2016	0:00	S	10,0
23	P	60°20.80'	21°06.50'	-	08:47	Tu	26.01.2016	0:00	S	10,0
24	P	60°30.80'	21°08.60'	-	09:47	Tu	26.01.2016	0:00	S	10,0
25	IU2	60°35.01'	21°07.80'	54	10:12	Tu	26.01.2016	1:00	S	10,0
26	P	60°35.90'	21°05.60'	-	11:21	Tu	26.01.2016	0:00	S	10,0
27	P	60°41.00'	21°02.25'	-	11:53	Tu	26.01.2016	0:00	S	10,0
28	IU1	60°46.01'	20°50.80'	33	12:38	Tu	26.01.2016	1:00	S	10,0
29	SR8	61°07.59'	20°55.80'	46	15:48	Tu	26.01.2016	1:30	S	10,0
30	SS29	61°03.89'	20°09.60'	111	19:34	Tu	26.01.2016	1:30	S	10,0
31	SR5	61°05.00'	19°34.78'	126	22:45	Tu	26.01.2016	1:30	S	10,0
32	MS9	61°46.01'	20°31.83'	101	05:11	We	27.01.2016	1:30	S	10,0
33	AALTO_SM	61°48.09'	20°14.11'	100	07:33	We	27.01.2016	1:30	S	10,0
34	F26	61°59.01'	20°03.78'	140	10:15	We	27.01.2016	1:30	S	10,0
35	US5B	62°35.17'	19°58.13'	214	15:22	We	27.01.2016	2:30	S	10,0
36	F18	63°18.86'	20°16.36'	105	22:19	We	27.01.2016	1:30	S	10,0
37	F13	63°47.01'	21°28.77'	65	04:06	Th	28.01.2016	1:30	S	10,0
38	KPO-7	63°55.14'	22°58.81'	30	09:39	Th	28.01.2016	1:00	S	10,0
39	IPS+ADCP_T	63°58.61'	22°31.48'	30	11:54	Th	28.01.2016	3:00	S	10,0
40	BO3	64°18.12'	22°20.59'	109	16:54	Th	28.01.2016	1:30	S	10,0
41	BIAS_BV	64°41.04'	23°14.44'	80	21:40	Th	28.01.2016	1:30	S	10,0
42	RR5	64°50.02'	23°09.77'	69	00:05	Fr	29.01.2016	1:30	S	10,0
43	RR7	64°44.02'	23°48.77'	39	03:21	Fr	29.01.2016	1:30	S	10,0
44	PPO-10	65°08.03'	24°35.77'	20	07:58	Fr	29.01.2016	1:00	S	10,0
45	F2	65°23.02'	23°27.76'	91	12:11	Fr	29.01.2016	1:30	S	10,0
46	RR1	64°58.02'	21°51.76'	84	18:26	Fr	29.01.2016	1:30	S	10,0
47	F9	64°42.02'	22°03.77'	120	21:37	Fr	29.01.2016	1:30	S	10,0
48	F16	63°31.01'	21°03.77'	45	06:41	Sa	30.01.2016	1:30	S	10,0
49	US3	62°45.53'	19°11.74'	182	14:59	Sa	30.01.2016	2:30	S	10,0
50	MS2	62°07.00'	17°50.78'	72	22:51	Sa	30.01.2016	1:30	S	10,0
51	MS6	61°59.02'	19°09.81'	72	04:09	Su	31.01.2016	1:30	S	10,0
52	SR1A	61°14.00'	17°39.79'	61	11:51	Su	31.01.2016	1:30	S	10,0
53	SR3	61°11.00'	18°13.80'	72	15:01	Su	31.01.2016	1:30	S	10,0
54	F33	60°31.99'	18°56.26'	135	20:56	Su	31.01.2016	1:30	S	10,0
55	F64	60°11.34'	19°08.55'	285	00:35	Mo	01.02.2016	2:30	S	10,0
56	MARIEHAMN	60°05.70'	19°55.30'	0	05:29	Mo	01.02.2016	2:30	S	10,0
57	F69	59°47.00'	19°55.80'	189	09:51	Mo	01.02.2016	2:30	S	10,0
58	TRÖSKÅH	59°39.60'	19°53.00'	60	13:06	Mo	01.02.2016	1:30	S	10,0
59	AALTOPI	59°15.00'	21°00.00'	98	18:49	Mo	01.02.2016	3:30	S	10,0
60	BY29	58°53.00'	20°19.00'	170	01:21	Tu	02.02.2016	2:00	S	10,0
61	BY20A	58°00.00'	19°54.00'	186	08:49	Tu	02.02.2016	2:30	S	10,0
62	WAVE1	57°25.00'	19°03.00'	?	15:45	Tu	02.02.2016	2:30	S	10,0
63	BY15	57°19.20'	20°03.00'	238	21:32	Tu	02.02.2016	2:30	S	10,0
64	BY10	56°38.00'	19°35.00'	145	04:26	We	03.02.2016	1:30	S	10,0
65	P	56°30.58'	18°51.78'	-	08:25	We	03.02.2016	0:00	S	10,0
66	P	56°30.58'	18°03.40'	-	11:06	We	03.02.2016	0:00	S	10,0
67	P	57°08.02'	17°38.37'	-	15:05	We	03.02.2016	0:00	S	10,0
68	BY38	57°07.00'	17°40.00'	108	15:13	We	03.02.2016	1:30	S	10,0
69	BY32	57°59.99'	17°59.81'	205	22:07	We	03.02.2016	2:00	S	10,0
70	LL23	58°34.99'	18°13.83'	446	03:42	Th	04.02.2016	4:30	S	10,0
71	LL19	58°52.84'	20°18.65'	169	14:55	Th	04.02.2016	1:30	S	10,0
72	LL17	59°02.00'	21°04.77'	171	18:58	Th	04.02.2016	1:30	S	10,0
73	P	59°20.57'	22°27.00'	-	01:04	Fr	05.02.2016	0:00	S	10,0
74	P	59°36.67'	23°32.07'	-	04:45	Fr	05.02.2016	0:00	S	10,0
75	P	59°51.81'	25°00.49'	-	09:27	Fr	05.02.2016	0:00	S	10,0

76	P	60°07.66'	24°53.82'	-	11:04	Fr	05.02.2016	0:00	S	10,0
77	HELSINKI	60°09.55'	24°55.37'	0	11:16	Fr	05.02.2016	1:30	S	10,0

Route map:



Cruise plan is printed at 20.01.2016 a 13:21.